

SCANNER INSTALLATION QUICK START FOR REMOTE DEPOSIT SCAN




**Independent
Bank**

ibtx.com

RAISING STANDARDS TOGETHER



Member FDIC  Equal Housing Lender

LICENSE TERMS FOR JACK HENRY/ENTERPRISE PAYMENT SOLUTIONS WHITE LABEL MATERIALS

Jack Henry & Associates, Inc., acting through its ProfitStars division ("JHA"), by providing documentation to you the licensee ("You") for private labeling (the "Materials"), grants a limited license (the "License") to You to publish and distribute the Materials under Your private label, solely in connection with Your promotion, marketing, and support to Your customers of the applicable JHA solutions purchased and/or licensed by You from JHA. Your use of the Materials indicates your acceptance of the terms of this License.

This License does not convey any rights to alter the content of the Materials other than to apply Your private labels.

The Materials covered by this License include only items that are provided to You in a word processing format appropriate for revision; such items do not include files provided in the secured portable document format (PDF). All other documentation and materials provided to You by JHA are not covered by this License and may not be altered or privately labeled by You without JHA's prior written permission.

JHA retains all ownership rights to the Materials, including, but not limited to, in accordance with U.S. Code Title 17—Copyrights. Accordingly, You have no rights with regard to the Materials other than those rights specifically granted to You under this License. Without limiting the generality of the foregoing, JHA reserves the right to:

(a) require You to cease publication, distribution, and use of any Materials that JHA determines in its sole discretion can no longer be used due to content-related issues, including, but not limited to, outdated and inaccurate content;

(b) create new versions of the Materials and require You to replace prior versions of the Materials with the new versions;

(c) create derivatives of, or new versions of, the Materials without Your private labels for publication elsewhere without notifying You or obtaining Your permission; and

(d) monitor Your publication, distribution, and use of the Materials for compliance with the terms of this License, and take any action deemed necessary by JHA in its sole discretion to stop and/or remedy any conduct by You that violates the terms of this License, including, but not limited to, revoking the rights granted herein.

Nothing contained herein shall be construed as creating any agency, legal representative, partnership, or other form of joint enterprise between You and JHA, and neither You nor JHA shall have the authority to contract for or bind the other in any matter.

JHA warrants that it owns all copyright and other proprietary rights to the Materials, that JHA is authorized to grant the rights granted to You under this License. EXCEPT FOR THE FOREGOING WARRANTIES, JHA MAKES NO OTHER REPRESENTATIONS OR WARRANTIES OF ANY KIND, NATURE, OR DESCRIPTION, EXPRESS OR IMPLIED, WITH RESPECT TO THE MATERIALS, INCLUDING, BUT NOT LIMITED TO, ANY WARRANTY OF MERCHANTABILITY OR FITNESS FOR A PARTICULAR PURPOSE, OR AS TO THE RESULTS TO BE OBTAINED BY YOU AS A RESULT OF YOUR USE OF THE MATERIALS IN YOUR BUSINESS, AND JHA HEREBY DISCLAIMS THE SAME.

The terms of this License apply to all Materials in Your possession or control now and in the future.

© 1999 – 2017 Jack Henry & Associates, Inc.

All rights reserved. Information in this document is subject to change without notice. Dates contained in this document are provided as estimates only and can be changed at any time at the sole discretion of Jack Henry & Associates, Inc.

Printed in the United States of America.

No part of this document may be copied, reproduced, stored in a retrieval system, displayed, distributed or transmitted in any form or any means whatsoever (electronic, mechanical or otherwise), including by photocopying or recording for any purpose, without the prior written permission of Jack Henry & Associates, Inc. Making unauthorized copies of this document for any purpose other than your own personal use is a violation of United States copyright laws.

Any unauthorized use of Jack Henry & Associates, Inc.'s trademarks and service marks is strictly prohibited. The following marks are registered and unregistered trademarks and service marks of Jack Henry & Associates, Inc.:

3rd Party Sweep™; 4sight™; AccountAssist™; Account Analysis™; Account Cross Sell™; Account Cross Sell Jumpstart™; Account Number Change™; ACH/Check Conversion Services™; ACH Client™; ACH Manager™; ACH Origination/Processing™; Advanced Card Processing Solutions Portal™; Advanced Reporting for Credit Unions™; AlertCenter™; AlertManager™; AllAccess™; Annual Disclosure Statement Online™; ArgoKeys®; ArgoKeys® Branch Sales Automation™; ArgoKeys® DepositKeys™; ArgoKeys® LendingKeys™; ArgoKeys® RelationshipKeys™; ATM Manager Pro®; ATM Manager Pro® – Asset & Site Management™; ATM Manager Pro® – Cash Management™; ATM Manager Pro® – Event Management™; ATM Manager Pro® – Financial Management™; AudioTel™; Banno Apps™; Banno CMS™; Banno Content™; Banno Marketing™; Banno Marketing PS™; Banno Mobile™; Banno Mobile PS™; Banno Monitor™; Banno Online™; Banno People™; Banno People PS™; Banno Platform™; Banno Reports™; Banno Reports PS™; Banno Settings™; Banno Settings PS™; Banno Support™; Banno Support PS™; Basel Report Pro™; BladeCenter™; Branch Anywhere™; Branch Deposit Reporting Pro™; Brand Management Services™; BusinessManager®; Call Report Pro™; Call Report Pro CU™; Card Holder Controls and Alerts™; Card Processing Solutions™; Card Processing Solutions Companion App™; Card Processing Solutions Credit™; Card Processing Solutions Debit™; Centurion Business Continuity Planning™; Centurion Business Recovery Consulting Group™; Centurion Co-Location™; Centurion Disaster Recovery®; Centurion Emergency Notification™; Centurion Enterprise-Level Recovery™; Centurion Episys Hosted Failover™; Centurion Hosted High Availability™; Centurion LiveVault™; Check 21 Cash Letter™; Check 21 Exception Processing™; CheckCollectPlus™; Check Collect Recovery Services™; Check Writer for Core Director®; CIF 20/20®; CIF 20/20® Teller™; CIF 20/20® Teller Capture™; CIF 20/20® Teller Offline™; Collateral and Document Tracking™; Commercial Lending Add-On Services™; Commercial Lending BusinessCenter™; Commercial Lending Center Suite™; Commercial Lending DecisionCenter™; Commercial Lending FinancialCenter™; Commercial Lending Funding Solutions™; Commercial Lending Management System™; Core Director®, Core Director® Teller™, Core Director® Teller Capture™; CPS Fraud Advisory Services™; Cruise®; CruiseNet®; CruiseNet® Account Alerts™; CruiseNet® Mobile CU™; CruiseNet® Mortgage Statement Extract™; CruiseNet® Multi-Currency™; CruiseNet® Relationship Pricing™; CUPRO® ALM™; CUPRO® ALM Express™; DataLink CU™; Demand Account Reclassification™; DIME™ (Document Image Management Engagement); DirectLine International™; DirectLine Wires™; Dynamic Content Modules™; ECS Capture Solutions™; ECS Digital Data Conversion™; ECS OneLook™; ECS Paper-to-Digital Conversion™; ECS RDC Conversion™; ECS Web™; eCTR™; Enhanced Account Analysis™; Enhanced Loan Application™ (ELA); Enhanced Loan Collections™; Enhanced Member Application™ (EMA); Enterprise Backup and Tape Encryption™; Enterprise Capture Solutions™; Enterprise Conversion Solutions™; Enterprise Payment Solutions™; Episys®; Episys® Anywhere™; Episys® Check Ordering Interface™; Episys® Collateral and Document Tracking™; Episys® Collection Toolkit™; Episys® Contact Event Manager™; Episys® Continuity Plan™ (ECP); Episys® Continuity Services™; Episys® Continuity Services Plus™; Episys® Data Store™; Episys® Dealer Reserve Accounting™; Episys® Escrow Module™; Episys® External Loan Processing Interface™; Episys® Failover Certification™; Episys® Failover Self-Certification™; Episys® ID Scanner Interface™; Episys® ID Scoring Integration™; Episys® Identity and Sanction Screening Integration™; Episys® Identity Q&A Integration™; Episys® Management Server™; Episys® Monitoring™; Episys® OFAC and Identity Score Integration™; Episys® OFAC Integration™; Episys® Overdraw Tolerance™; Episys® PowerCheckUp™; Episys® Quest™; Episys® Real Time External Loan Interface™; Episys® Replication Failover™; Episys® Skip Payment™; Episys® University™; Episys® Vaulting™; Episys® Virtualization™; EPS Remote Deposit Capture™; Extra Awards®; FactorSoft®; Fed-File Pro™; FlexPass™; First PIN™; FormSmart™; Genesys Check Imaging Suite™; Gladiator®; Gladiator® Advanced Malware Protection™; Gladiator® Consulting Services™; Gladiator® CoreDEFENSE Managed Security Services™; Gladiator® eBanking Compliance Services™; Gladiator® eCommercial SAT™; Gladiator® Enterprise Network Design, Implementation & Support Services™; Gladiator® Enterprise Security Monitoring™; Gladiator® Enterprise Virtualization Services™; Gladiator® Enterprise Vulnerability Scanning™; Gladiator® eSAT™; Gladiator® eShield™; Gladiator® Help Desk Service™; Gladiator® Hosted Network Solutions™; Gladiator® Incident Alert™; Gladiator® IT Regulatory Compliance/Policy Products™; Gladiator® Managed IT Services™; Gladiator® Managed Unified Communications Services™; Gladiator® NetTeller® Enterprise Security Monitoring™; Gladiator® Network Services™; Gladiator® Phishing Defense and Response Service™; Gladiator® Social Media Compliance Services™; Gladiator® Technology®; Gladiator® Unified Communications Services™; Gladiator® Virtual Information Security Officer™; Gladiator® Website Compliance Review™; goDough®; GoldPass™; Hosted Pay Page™; iBizManager™; ImageCenter™; ImageCenter ATM Deposit Management™; ImageCenter Express™; ImageCenter Image Capture™; ImageCenter Interactive Teller Capture™; InTouch Voice Response®; iPay Business Bill Pay™; iPay Check Printing™; iPay Consumer Bill Pay™; iPay QuickPay™; iPay Solutions™; iTalk™; Jack Henry & Associates, Inc.®; Jack Henry Banking®; JHA Cash Automation™; JHA Client Services™; JHA Client Services Consulting™; JHA Commercial Cash Management™; JHA Compliance Access™; JHA Consumer Pieces™; JHA Customer Payment Portal™; JHA Electronic Statements™; JHA Electronic Statements – Interactive™; JHA EMV™; JHA Enterprise Risk Mitigation Solutions™; JHA EPS SmartPay Biller Direct™; JHA EPS SmartPay Business™; JHA EPS SmartPay Express™; JHA Failover™; JHA Get Smart™; JHA Hosted ATM Driving™; JHA Image ATM™; JHA Image ATM Capture and Reconciliation™; JHA Investor Servicing™; JHA Marketplace™; JHA Merchant Services™; JHA Money Center™; JHA mRDC™; JHA Multifactor Authentication™; JHA Online Financial Management™; JHA OutLink Processing Services™; JHA Payment Solutions™; JHA Payment Processing Solutions®; JHA Prepaid Cards™; JHA Professional Consulting Services™; JHA Program Management Services™; JHA Real Time™; JHA Shared Branch™; JHA Small Business Cash Management™; JHA Sweep Account Processing™; JHA Tokenization™; JHA Treasury Management™; JHA Website Design & Hosting™; JHA Website Security Services™; jhaAddress Verify™; jhaCall Center™; jhaCall Center In-House™; jhaCall Center Outsourced Services™; jhaCall Center Outsourced Services After Hours™; jhaCall Center Outsourced Full Business Services™; jhaCall Center Outsourced Select Services™; jhaDirect®; jhaEnterprise Notifications System™; jhaEnterprise Workflow™; jhaID Scan™; jhaKnow™; jhaKnow Express™; jhaPassPort Debit Optimizer™; jhaPassPort™; jhaPassPort.pro™; jhaPassPort Direct™; jhaPassPort Fraud Center™; jhaPassPort Hot Card Center™; jhaPassPort Promotions and Consulting Services™; jhaPassPort Switch™; jhaArchive™; jVault®; jXchange™; Know-It-All Credit Programs™; Know-It-All Education™; Know-It-All Learning Management Portal™; Know-It-All Now™; Landlord/Tenant Security Deposit Tracking™; LendingNetwork®; Loan Collateral Tracking™; Margin Maximizer Interactive™; Margin Maximizer MaxConnect™; Margin Maximizer Pronto™; Margin Maximizer Suite®; Masterlink™; MaxConnect Interactive™; MedCashManager®; Mutual Fund Sweep™; Net.Check™; Net.Teller™; Net.Teller® Bill Pay™; Net.Teller® Cash Management™; Net.Teller® MemberConnect™; Net.Teller® Online Banking™; Net.Teller® Security Manager™; Net.Teller® Text Alerts™; Net.Teller® Vanity URL™; Net.Teller® Vanity URL.bank™; OFX Gateway™; OnBoard Deposits™; OnBoard Loans™; OnNet™; OnTarget™; Opening Act Express™; Optimizer™; Optimum Credit Union™; Participation Lending™; PIN Change Service™; Point™; PointMobility™; PowerOn®; PowerOn2™; PowerOn Marketplace®; PowerOn® Studio™; PROFITability®; Organizational PROFITability® Analysis System™; Product PROFITability® Analysis System™; PROFITability® Budget™; PROFITability® Reporting Service™; PROFITstar®; PROFITstar® ALM Budgeting™; PROFITstar® Budget™; PROFITstar® Classic™; PROFITstar® Reporting Service™; ProfitStars®; ProfitStars® CECL Analysis and Reporting™; ProfitStars® CECL DataStore and Validation™; ProfitStars® Customer Pricing and Profitability™; ProfitStars® Direct™; ProfitStars® Financial Performance Suite™; ProfitStars® Mobile™; ProfitStars Synergy®; Refi Analyzer™; Regulatory Reporting Solutions™; Relationship 360™; Relationship Profitability Management™ (RPM); RemitCentral™; RemitPlus® Express™; RemitPlus® HRCM™; RemitPlus® Remittance/Lookbox™; RemitWeb™; Remote Deposit Anywhere™; Remote Deposit Complete™; Remote Deposit Express™; Remote Deposit Now™; Remote Deposit Scan™; ReportHub™; RPM Reporting Service™; Silhouette Document Imaging®; SilverLake Real Time™; SilverLake System®; SilverLake Teller™; SilverLake Teller Capture™; SilverLake Teller Offline™; Smart EIP™; Smart GL™; SmartSight®; smsGuardian™; Store & Forward™; StreamLine Platform Automation®; StreamLine Platform Automation® – Deposits™; StreamLine Platform Automation® – Loans™; Summit Support®; SymAdvisor™; SymApp™; SymChoice Loan™; SymConnect™; SymForm™; SymForm PDF™; Symitar®; Symitar® ATM Services™; Symitar® Database Cleansing Package™; Symitar® eNotifications™; Symitar® Fraud Management™; Symitar® Member Business Services™; Symitar® Member Privilege™; Symitar® Wire Management™; Symitar® EASE™; SymX™; SymXchange™; Synapsys®; Synapsys® Lobby Tracking™; Synapsys® Member Relationship Management™; Synergy AdvancedPDF™; Synergy API Integration Toolkit™; Synergy AutolImport™; Synergy Automated Document Recognition™ (ADR); Synergy Batch Document Recognition™ (BDR); Synergy Check Archive™; Synergy DataMart™; Synergy Document Management™; Synergy Document Recognition™; Synergy Document Tracking™; Synergy eDistribution™; Synergy eMailAssist™; Synergy Enterprise Content Management™ (ECM); Synergy eSign™; Synergy eSignWeb™; Synergy eSign Integration Module™; Synergy eStorage™; Synergy Express™; Synergy Express Custom Data Storage Report™; Synergy Express Report Parameter Service™; Synergy ID Scan™; Synergy iSign™; Synergy Kofax Capture™; Synergy PowerSearch™; Synergy Reports™; Synergy Workflow Management™; TellerMaster™; Teller BondMaster™; Teller Cash Dispenser™; Teller Cash Recycler™; Teller CheckMaster™; Teller CheckMaster Plus™; Teller Co-Mingle™; Teller CTRMaster™; Teller Isosoles™; Teller PassBook™; Teller SigMaster™; Teller Capture™; Teller Orbograph™; TheVayiPay®; TimeTrack Human Resources™; TimeTrack Payroll System™; TimeTrack Time and Attendance™; Transaction Logging and Vaulting Server™; Transaction Logging Server™; ValuePass™; Vehicle Pricing Interface™; Vertex Teller Automation System™; Virtual Transaction Logging Server™; WebEpisys™; Yellow Hammer™; Yellow Hammer Express™; Yellow Hammer ACH Origination™; Yellow Hammer BSA™; Yellow Hammer BSA Express™; Yellow Hammer BSA Regulatory Consulting Service™; Yellow Hammer EFT Fraud Detective™; Yellow Hammer Fraud Detective™; Yellow Hammer SAR Center™; Yellow Hammer Wire Origination™; Xperience™

Slogans

Cutting-Edge IT Solutions for the Future of Credit Unions™; Know-It-All – Empowering Users Through Knowledge™; Leading through technology ... guiding through support™; Powering Actionable Insight™; The Depth of Financial Intelligence™; We Are Looking Out For You™; Where Tradition Meets Technology™

Various other trademarks and service marks used or referenced in this document are the property of their respective companies/owners.

Other Trademarks

The MIT License (MIT)

Permission is hereby granted, free of charge, to any person obtaining a copy of this software and associated documentation files (the "Software"), to deal in the Software without restriction, including without limitation the rights to use, copy, modify, merge, publish, distribute, sublicense, and/or sell copies of the Software, and to permit persons to whom the Software is furnished to do so, subject to the following conditions:

The above copyright notice and this permission notice shall be included in all copies or substantial portions of the Software.

Portions of this software:

The MIT License (MIT)

Copyright (c) 2014-2015 Andrey Gershun (agershun@gmail.com) & Mathias Rangel Wulff (mathiasrw@gmail.com)

Copyright (c) 2013-2015 The AngularUI Team, Karsten Sperling

Copyright (c) 2010-2015 Google, Inc. <http://angularjs.org>

Copyright (c) 2012-2015 the AngularUI Team, <https://github.com/organizations/angular-ui/teams/291112>

Copyright (c) 2014 philippd

Copyright © 2015 Philipp Alferov.

Copyright (c) 2013 danialfarid

Copyright (c) 2013 Marco Rinck

Copyright (c) 2013 Mike Grabski

Copyright (c) 2014 Igor Rafael

Copyright (c) <2014> <pascal.precht@gmail.com>

Copyright (C) 2014 lisposter(Leigh Zhu)

Copyright (c) 2014 Michael Bromley

Copyright © 2014 Eli Grey.

Copyright (c) 2011-2015 Twitter, Inc

Copyright (c) 2008-2014 Pivotal Labs

Copyright 2005, 2014 jQuery Foundation, Inc. and other contributors

Copyright (c) 2007 James Newton-King

Copyright (c) 2009–2015 Modernizr

Copyright (c) 2011-2015 Tim Wood, Iskren Chernev, Moment.js contributors

Copyright (c) 2013 FeedbackHound

Copyright (c) 2015 the AngularUI Team, <http://angular-ui.github.com>

Copyright (c) 2009-2014 Jon Rohan, James M. Greene

Permission is hereby granted, free of charge, to any person obtaining a copy of this software and associated documentation files (the "Software"), to deal in the Software without restriction, including without limitation the rights to use, copy, modify, merge, publish, distribute, sublicense, and/or sell copies of the Software, and to permit persons to whom the Software is furnished to do so, subject to the following conditions:

The above copyright notice and this permission notice shall be included in all copies or substantial portions of the Software.

THE SOFTWARE IS PROVIDED "AS IS", WITHOUT WARRANTY OF ANY KIND, EXPRESS OR IMPLIED, INCLUDING BUT NOT LIMITED TO THE WARRANTIES OF MERCHANTABILITY, FITNESS FOR A PARTICULAR PURPOSE AND NONINFRINGEMENT. IN NO EVENT SHALL THE AUTHORS OR COPYRIGHT HOLDERS BE LIABLE FOR ANY CLAIM, DAMAGES OR OTHER LIABILITY, WHETHER IN AN ACTION OF CONTRACT, TORT OR OTHERWISE, ARISING FROM, OUT OF OR IN CONNECTION WITH THE SOFTWARE OR THE USE OR OTHER DEALINGS IN THE SOFTWARE.

BSD License

Copyright (c) 2010 Terence Parr

PhantomJS

Copyright (c) 2015, Hibernating Rhinos

All rights reserved. Redistribution and use in source and binary forms, with or without modification, are permitted provided that the following conditions are met:

Redistributions of source code must retain the above copyright notice, this list of conditions and the following disclaimer. Redistributions in binary form must reproduce the above copyright notice, this list of conditions and the following disclaimer in the documentation and/or other materials provided with the distribution. Neither the name of the author nor the names of its contributors may be used to endorse or promote products derived from this software without specific prior written permission.

THIS SOFTWARE IS PROVIDED BY THE COPYRIGHT HOLDERS AND CONTRIBUTORS "AS IS" AND ANY EXPRESS OR IMPLIED WARRANTIES, INCLUDING, BUT NOT LIMITED TO, THE IMPLIED WARRANTIES OF MERCHANTABILITY AND FITNESS FOR A PARTICULAR PURPOSE ARE DISCLAIMED. IN NO EVENT SHALL THE COPYRIGHT OWNER OR CONTRIBUTORS BE LIABLE FOR ANY DIRECT, INDIRECT, INCIDENTAL, SPECIAL, EXEMPLARY, OR CONSEQUENTIAL DAMAGES (INCLUDING, BUT NOT LIMITED TO, PROCUREMENT OF SUBSTITUTE GOODS OR SERVICES; LOSS OF USE, DATA, OR PROFITS; OR BUSINESS INTERRUPTION) HOWEVER CAUSED AND ON ANY THEORY OF LIABILITY, WHETHER IN CONTRACT, STRICT LIABILITY, OR TORT (INCLUDING NEGLIGENCE OR OTHERWISE) ARISING IN ANY WAY OUT OF THE USE OF THIS SOFTWARE, EVEN IF ADVISED OF THE POSSIBILITY OF SUCH DAMAGE.

Apache License

Copyright (c) 2009-2010 dotless project, <http://www.dotlesscss.com>

Copyright (C) 2012-2015 SheetJS

Unity

Version 2.0, January 2004

<http://www.apache.org/licenses/>

TERMS AND CONDITIONS FOR USE, REPRODUCTION, AND DISTRIBUTION

1. Definitions.

"License" shall mean the terms and conditions for use, reproduction, and distribution as defined by Sections 1 through 9 of this document. "Licensor" shall mean the copyright owner or entity authorized by the copyright owner that is granting the License. "Legal Entity" shall mean the union of the acting entity and all other entities that control, are controlled by, or

are under common control with that entity. For the purposes of this definition, "control" means (i) the power, direct or indirect, to cause the direction or management of such entity, whether by contract or otherwise, or (ii) ownership of fifty percent (50%) or more of the outstanding shares, or (iii) beneficial ownership of such entity. "You" (or "Your") shall mean an individual or Legal Entity exercising permissions granted by this License. "Source" form shall mean the preferred form for making modifications, including but not limited to software source code, documentation source, and configuration files. "Object" form shall mean any form resulting from mechanical transformation or translation of a Source form, including but not limited to compiled object code, generated documentation, and conversions to other media types. "Work" shall mean the work of authorship, whether in Source or Object form, made available under the License, as indicated by a copyright notice that is included in or attached to the work (an example is provided in the Appendix below). "Derivative Works" shall mean any work, whether in Source or Object form, that is based on (or derived from) the Work and for which the editorial revisions, annotations, elaborations, or other modifications represent, as a whole, an original work of authorship. For the purposes of this License, Derivative Works shall not include works that remain separable from, or merely link (or bind by name) to the interfaces of, the Work and Derivative Works thereof. "Contribution" shall mean any work of authorship, including the original version of the Work and any modifications or additions to that Work or Derivative Works thereof, that is intentionally submitted to Licensor for inclusion in the Work by the copyright owner or by an individual or Legal Entity authorized to submit on behalf of the copyright owner. For the purposes of this definition, "submitted" means any form of electronic, verbal, or written communication sent to the Licensor or its representatives, including but not limited to communication on electronic mailing lists, source code control systems, and issue tracking systems that are managed by, or on behalf of, the Licensor for the purpose of discussing and improving the Work, but excluding communication that is conspicuously marked or otherwise designated in writing by the copyright owner as "Not a Contribution." "Contributor" shall mean Licensor and any individual or Legal Entity on behalf of whom a Contribution has been received by Licensor and subsequently incorporated within the Work.

2. Grant of Copyright License. Subject to the terms and conditions of this License, each Contributor hereby grants to You a perpetual, worldwide, non-exclusive, no-charge, royalty-free, irrevocable copyright license to reproduce, prepare Derivative Works of, publicly display, publicly perform, sublicense, and distribute the Work and such Derivative Works in Source or Object form.

3. Grant of Patent License. Subject to the terms and conditions of this License, each Contributor hereby grants to You a perpetual, worldwide, non-exclusive, no-charge, royalty-free, irrevocable (except as stated in this section) patent license to make, have made, use, offer to sell, sell, import, and otherwise transfer the Work, where such license applies only to those patent claims licensable by such Contributor that are necessarily infringed by their Contribution(s) alone or by combination of their Contribution(s) with the Work to which such Contribution(s) was submitted. If You institute patent litigation against any entity (including a cross-claim or counterclaim in a lawsuit) alleging that the Work or a Contribution incorporated within the Work constitutes direct or contributory patent infringement, then any patent licenses granted to You under this License for that Work shall terminate as of the date such litigation is filed.

4. Redistribution. You may reproduce and distribute copies of the Work or Derivative Works thereof in any medium, with or without modifications, and in Source or Object form, provided that You meet the following conditions:

(a) You must give any other recipients of the Work or Derivative Works a copy of this License; and (b) You must cause any modified files to carry prominent notices stating that You changed the files; and (c) You must retain, in the Source form of any Derivative Works that You distribute, all copyright, patent, trademark, and attribution notices from the Source form of the Work, excluding those notices that do not pertain to any part of the Derivative Works; and (d) If the Work includes a "NOTICE" text file as part of its distribution, then any Derivative Works that You distribute must include a readable copy of the attribution notices contained within such NOTICE file, excluding those notices that do not pertain to any part of the Derivative Works, in at least one of the following places: within a NOTICE text file distributed as part of the Derivative Works; within the Source form or documentation, if provided along with the Derivative Works; or, within a display generated by the Derivative Works, if and wherever such third-party notices normally appear. The contents of the NOTICE file are for informational purposes only and do not modify the License. You may add Your own attribution notices within Derivative Works that You distribute, alongside or as an addendum to the NOTICE text from the Work, provided that such additional attribution notices cannot be construed as modifying the License. You may add Your own copyright statement to Your modifications and may provide additional or different license terms and conditions for use, reproduction, or distribution of Your modifications, or for any such Derivative Works as a whole, provided Your use, reproduction, and distribution of the Work otherwise complies with the conditions stated in this License.

5. Submission of Contributions. Unless You explicitly state otherwise, any Contribution intentionally submitted for inclusion in the Work by You to the Licensor shall be under the terms and conditions of this License, without any additional terms or conditions. Notwithstanding the above, nothing herein shall supersede or modify the terms of any separate license agreement you may have executed with Licensor regarding such Contributions.

6. Trademarks. This License does not grant permission to use the trade names, trademarks, service marks, or product names of the Licensor, except as required for reasonable and customary use in describing the origin of the Work and reproducing the content of the NOTICE file.

7. Disclaimer of Warranty. Unless required by applicable law or agreed to in writing, Licensor provides the Work (and each Contributor provides its Contributions) on an "AS IS" BASIS, WITHOUT WARRANTIES OR CONDITIONS OF ANY KIND, either express or implied, including, without limitation, any warranties or conditions of TITLE, NON-INFRINGEMENT, MERCHANTABILITY, or FITNESS FOR A PARTICULAR PURPOSE. You are solely responsible for determining the appropriateness of using or redistributing the Work and assume any risks associated with Your exercise of permissions under this License.

8. Limitation of Liability. In no event and under no legal theory, whether in tort (including negligence), contract, or otherwise, unless required by applicable law (such as deliberate and grossly negligent acts) or agreed to in writing, shall any Contributor be liable to You for damages, including any direct, indirect, special, incidental, or consequential damages of any character arising as a result of this License or out of the use or inability to use the Work (including but not limited to damages for loss of goodwill, work stoppage, computer failure or malfunction, or any and all other commercial damages or losses), even if such Contributor has been advised of the possibility of such damages.

9. Accepting Warranty or Additional Liability. While redistributing the Work or Derivative Works thereof, You may choose to offer, and charge a fee for, acceptance of support, warranty, indemnity, or other liability obligations and/or rights consistent with this License. However, in accepting such obligations, You may act only on Your own behalf and on Your sole responsibility, not on behalf of any other Contributor, and only if You agree to indemnify, defend, and hold each Contributor harmless for any liability incurred by, or claims asserted against, such Contributor by reason of your accepting any such warranty or additional liability.

END OF TERMS AND CONDITIONS

MICROSOFT .NET LIBRARY

These license terms are an agreement between Microsoft Corporation (or based on where you live, one of its affiliates) and you. Please read them. They apply to the software named above, which includes the media on which you received it, if any. The terms also apply to any Microsoft updates, supplements, Internet-based services, and support services for this software, unless other terms accompany those items. If so, those terms apply.

BY USING THE SOFTWARE, YOU ACCEPT THESE TERMS. IF YOU DO NOT ACCEPT THEM, DO NOT USE THE SOFTWARE. IF YOU COMPLY WITH THESE LICENSE TERMS, YOU HAVE THE PERPETUAL RIGHTS BELOW.

1. **INSTALLATION AND USE RIGHTS.** a. **Installation and Use.** You may install and use any number of copies of the software to design, develop and test your programs. You may modify, copy, distribute or deploy any .js files contained in the software as part of your programs. b. **Third Party Programs.** The software may include third party programs that Microsoft, not the third party, licenses to you under this agreement. Notices, if any, for the third party program are included for your information only. 2. **ADDITIONAL LICENSING REQUIREMENTS AND/OR USE RIGHTS.** a. **DISTRIBUTABLE CODE.** In addition to the .js files described above, the software is comprised of Distributable Code. "Distributable Code" is code that you are permitted to distribute in programs you develop if you comply with the terms below. i. **Right to Use and Distribute.** You may copy and distribute the object code form of the software. **Third Party Distribution.** You may permit distributors of your programs to copy and distribute the Distributable Code as part of those programs. ii. **Distribution Requirements.** For any Distributable Code you distribute, you must use the Distributable Code in your programs and not as a standalone distribution; require distributors and external end users to agree to terms that protect it at least as much as this agreement; display your valid copyright notice on your programs; and indemnify, defend, and hold harmless Microsoft from any claims, including attorneys' fees, related to the distribution or use of your programs. iii. **Distribution Restrictions.** You may not alter any copyright, trademark or patent notice in the Distributable Code; use Microsoft's trademarks in your programs' names or in a way that suggests your programs come from or are endorsed by Microsoft; include Distributable Code in malicious, deceptive or unlawful programs; or modify or distribute the source code of any Distributable Code so that any part of it becomes subject to an Excluded License. An Excluded License is one that requires, as a condition of use, modification or distribution, that the code be disclosed or distributed in source code form; or others have the right to modify it. 3. **SCOPE OF LICENSE.** The software is licensed, not sold. This agreement only gives you some rights to use the software. Microsoft reserves all other rights. Unless applicable law gives you more rights despite this limitation, you may use the software only as expressly permitted in this agreement. In doing so, you must comply with any technical limitations in the software that only allow you to use it in certain ways. You may not work around any technical limitations in the software; reverse engineer, decompile or disassemble the software, except and only to the extent that applicable law expressly permits, despite this limitation; publish the software for others to copy; rent, lease or lend the software; or transfer the software or this agreement to any third party. 4. **BACKUP COPY.** You may make one backup copy of the software. You may use it only to reinstall the software. 5. **DOCUMENTATION.** Any person that has valid access to your computer or internal network may copy and use the documentation for your internal, reference purposes. 6. **EXPORT RESTRICTIONS.** The software is subject to United States export laws and regulations. You must comply with all domestic and international export laws and regulations that apply to the software. These laws include restrictions on destinations, end users and end use. For additional information, see www.microsoft.com/exporting. 7. **SUPPORT SERVICES.** Because this software is "as is," we may not provide support services for it. 8. **ENTIRE AGREEMENT.** This agreement, and the terms for supplements, updates, Internet-based services and support services that you use, are the entire agreement for the software and support services. 9. **APPLICABLE LAW.** a. **United States.** If you acquired the software in the United States, Washington state law governs the interpretation of this agreement and applies to claims for breach of it, regardless of conflict of laws principles. The laws of the state where you live govern all other claims, including claims under state consumer protection laws, unfair competition laws, and in tort. b. **Outside the United States.** If you acquired the software in any other country, the laws of that country apply. 10. **LEGAL EFFECT.** This agreement describes certain legal rights. You may have other rights under the laws of your country. You may also have rights with respect to the party from whom you acquired the software. This agreement does not change your rights under the laws of your country if the laws of your country do not permit it to do so. 11. **DISCLAIMER OF WARRANTY. THE SOFTWARE IS LICENSED "AS-IS." YOU BEAR THE RISK OF USING IT. MICROSOFT GIVES NO EXPRESS WARRANTIES, GUARANTEES OR CONDITIONS. YOU MAY HAVE ADDITIONAL CONSUMER RIGHTS OR STATUTORY GUARANTEES UNDER YOUR LOCAL LAWS WHICH THIS AGREEMENT CANNOT CHANGE. TO THE EXTENT PERMITTED UNDER YOUR LOCAL LAWS, MICROSOFT EXCLUDES THE IMPLIED WARRANTIES OF MERCHANTABILITY, FITNESS FOR A PARTICULAR PURPOSE AND NON-INFRINGEMENT.** 12. **LIMITATION ON AND EXCLUSION OF REMEDIES AND DAMAGES. YOU CAN RECOVER FROM MICROSOFT AND ITS SUPPLIERS ONLY DIRECT DAMAGES UP TO U.S. \$5.00. YOU CANNOT RECOVER ANY OTHER DAMAGES, INCLUDING CONSEQUENTIAL, LOST PROFITS, SPECIAL, INDIRECT OR INCIDENTAL DAMAGES.** This limitation applies to anything related to the software, services, content (including code) on third party Internet sites, or third party programs; and claims for breach of contract, breach of warranty, guarantee or condition, strict liability, negligence, or other tort to the extent permitted by applicable law. It also applies even if Microsoft knew or should have known about the possibility of the damages. The above limitation or exclusion may not apply to you because your country may not allow the exclusion or limitation of incidental, consequential or other damages.

Contents

- Introduction 1
 - System Requirements 1
 - Configuring Temporary Internet Files and History Settings – Internet Explorer Only 2
- Installing Device Control 6
- Installing Your Scanner 10

Introduction

The *Scanner Installation Quick Start: Remote Deposit Scan* is meant to assist users through the installation of EPS Device Control and any scanner(s) necessary. Prior to beginning your scanner installation, you will need the following information from your financial institution.

- The application URL where you will use the provided Administrator login credentials (see figure)

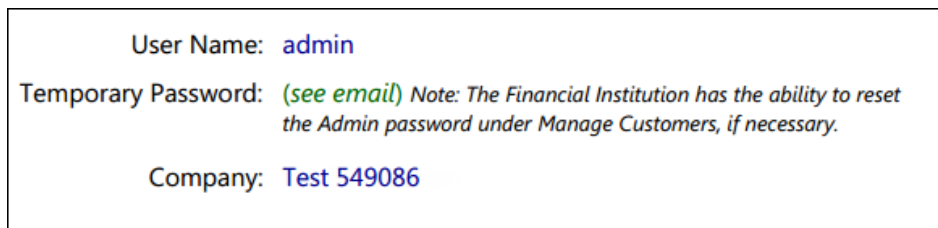


FIGURE 1 - SAMPLE INFORMATION FROM LOGIN LETTER

- Your Merchant ID and scanner model/scanner number
- Instructions for any EPS Education training you wish to schedule

NOTE: Upon logging in to the application, you will be prompted to change your temporary password. A password must be between 8-15 characters and contain at least one uppercase letter, one lowercase letter, and one number. EPS Support is not available for training in the use of the application.

In addition to the login letter, your financial institution can provide you with the *Remote Deposit Scan Handbook*, a guide that assists you with the use of the application once it has been installed.

System Requirements

For an optimal experience a high-speed Internet connection is recommended, in addition the following components are required for working with the application(s).

NOTE: The application does not support Apple® Boot Camp® or any virtualization software.

For the PC:

- Local administrative rights
- USB port 2.0 or higher
- .NET® Framework 4.6 or higher

For Microsoft® Windows®:

- Windows 7 Service Pack 1: Microsoft Internet Explorer® 11 or Google Chrome™
- Windows 8.1: Microsoft Internet Explorer 11 or Google Chrome
- Windows 10: Microsoft Internet Explorer 11, Microsoft Edge®, or Google Chrome

NOTE: The current version of Chrome and its two previous versions are supported.

The following scanners support this application's features.

Scanner	Model Supported
Panini®	I:Deal® WI: Deal My Vision X Vision X
Digital Check®	CX30 TS230 TS240
RDM®	EC7000i EC7500i
Epson®	Capture One TMS 1000
Unisys Burroughs®	Micro EX Micro Elite SmartSource Professional® SmartSource Professional Elite SmartSource Merchant Elite SmartSource Value

Configuring Temporary Internet Files and History Settings – Internet Explorer Only

Configuring these settings can keep the pages in the system consistently refreshed with information.

1. Open **Control Panel** from your *Start Menu*. Select **Internet Options** as shown below. Note: You may need to select **Network and Internet** and then **Internet Options**.

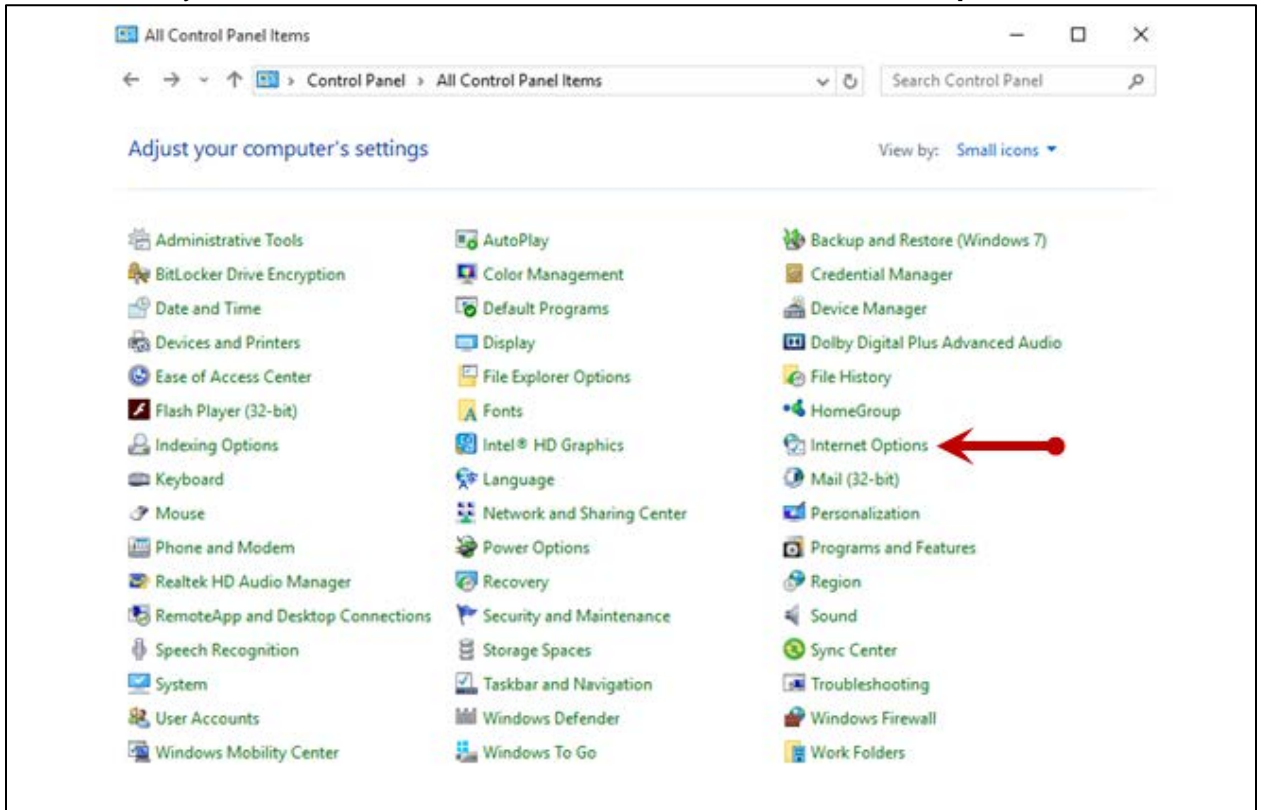


FIGURE 2 – GENERAL TAB FOR INTERNET OPTIONS

2. From the tabs at the top of the *Internet Options* window, select **General**.



FIGURE 3 - GENERAL TAB FOR INTERNET OPTIONS

3. Under the *Browsing history* section, choose the **Settings** option (see below).

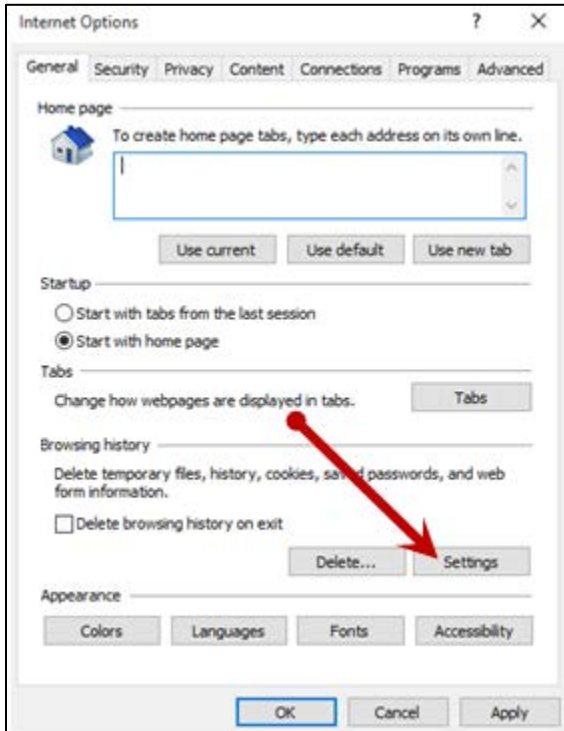


FIGURE 4 - SETTINGS OPTION UNDER BROWSING HISTORY

4. The *Temporary Internet Files and History Settings* window appears. Under *Check for newer versions of stored pages*, select the **Every time I visit the webpage** option.

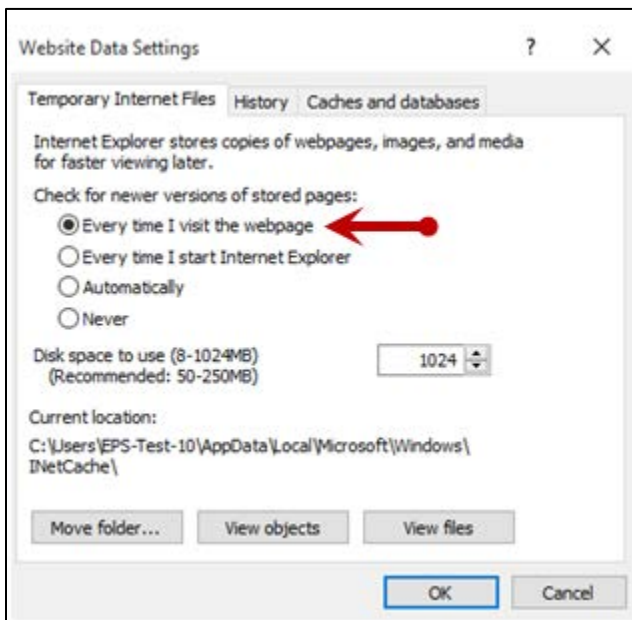


FIGURE 5 - TEMPORARY INTERNET FILES AND HISTORY SETTINGS

5. Click **OK** at the bottom of the *Temporary Internet Files and History Settings* window.

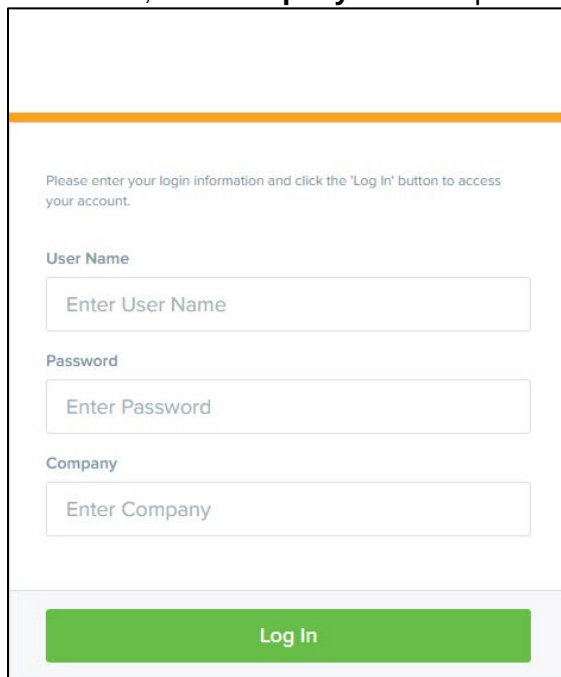
6. Select **OK** from the bottom of the *Internet Options* window.

Installing Device Control

If you are accessing the Remote Deposit application for the first time, you will need to install Device Control, a feature used to manage your scanner(s). Device Control will need to be installed before you can begin making deposits.

NOTE: If you are having issues installing Device Control or your scanner, please contact epssupport@profitstars.com or 877-542-2244.

1. Navigate to your financial institution's application, and complete the **User Name**, **Password**, and **Company** fields as pictured below. Click **Login**.



The screenshot shows a login interface with a white background and a light blue header. Below the header is a thin orange horizontal line. The main content area contains the following elements:

- A message: "Please enter your login information and click the 'Log In' button to access your account."
- A "User Name" label above a text input field containing the placeholder text "Enter User Name".
- A "Password" label above a text input field containing the placeholder text "Enter Password".
- A "Company" label above a text input field containing the placeholder text "Enter Company".
- A green "Log In" button at the bottom of the form.

FIGURE 6 - LOGIN

2. Select **Transactions** from the left main menu.

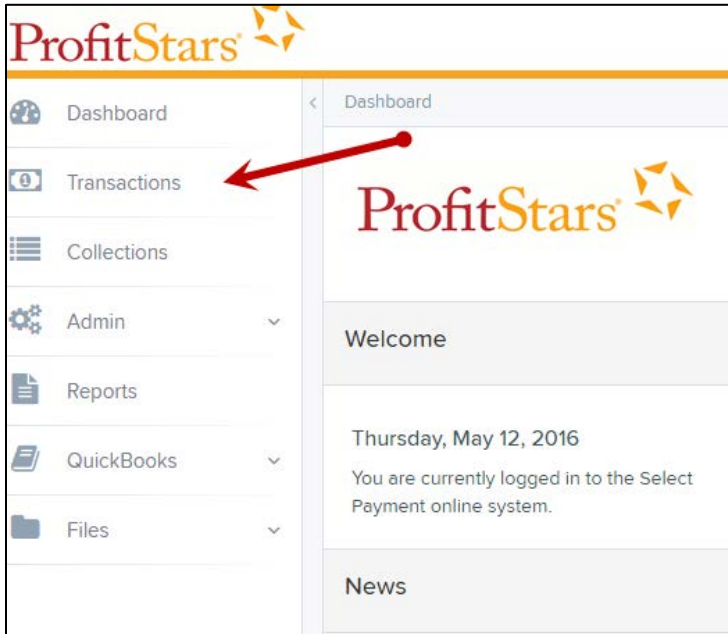


FIGURE 7 - TRANSACTIONS OPTION

3. Under *Check Processing*, choose **Remote Deposit Scan**.

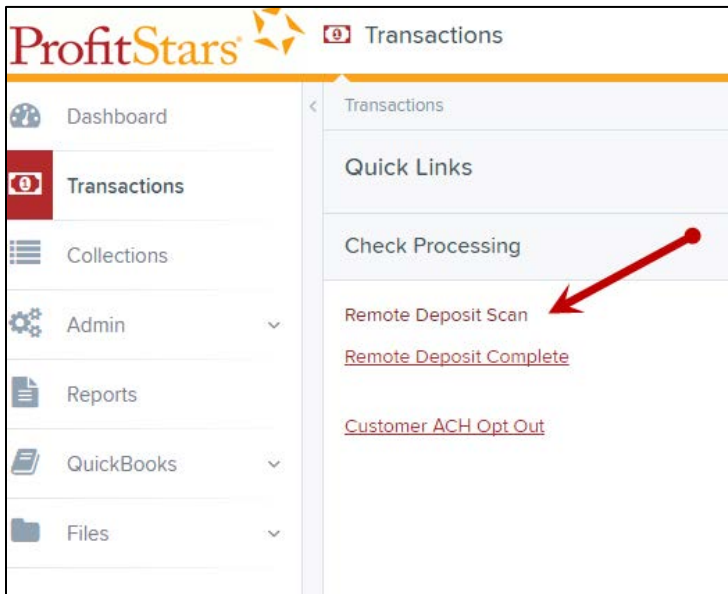


FIGURE 8 - REMOTE DEPOSIT SCAN OPTION

4. The Device Control prompt appears, informing you that Device Control is attempting to launch. Select **Run** to continue.
For Google Chrome users, click on **ProfitStarsDeviceCon....exe** (as shown in the second image below).

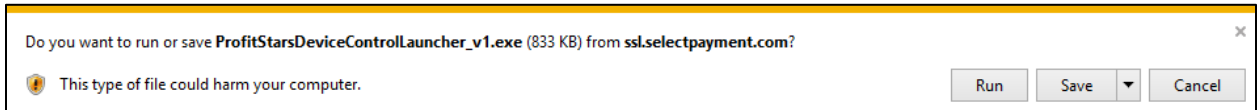


FIGURE 9 - LAUNCH DEVICE CONTROL – INTERNET EXPLORE 11

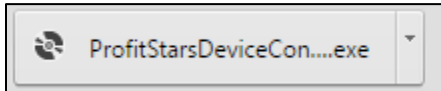


FIGURE 10 - LAUNCH DEVICE CONTROL – GOOGLE CHROME

7. The system will prompt you to begin installing Device Control. Click **Install** to continue. This may take several minutes.

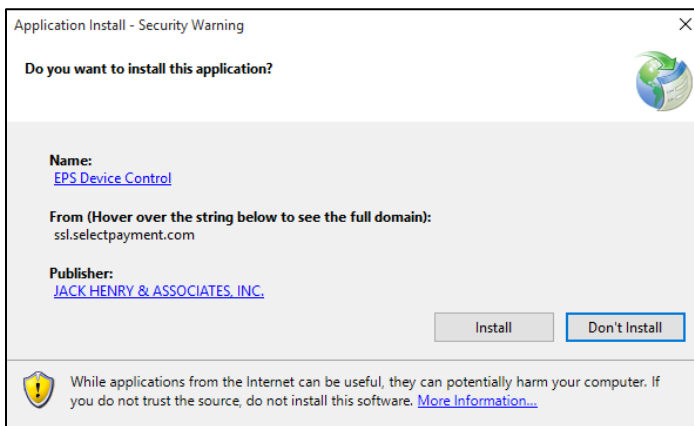


FIGURE 11 - PROMPT TO INSTALL DEVICE CONTROL

8. A prompt may appear to ensure that a user with Administrator rights to the computer will proceed with the installation. Click **OK** to continue.

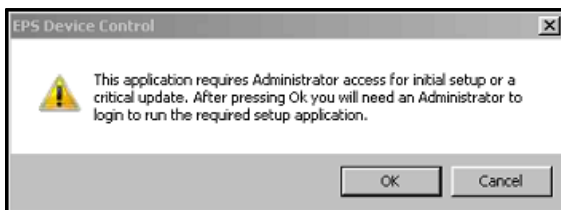


FIGURE 12 - PROMPT FOR USER WITH ADMINISTRATOR RIGHTS TO COMPUTER

9. A prompt may appear for the application to make additional changes. Select **Yes** to continue.

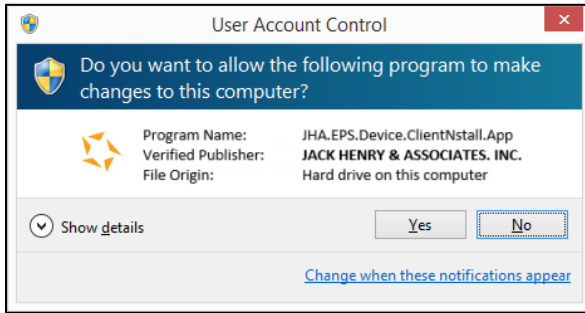


FIGURE 13 - USER ACCOUNT CONTROL PROMPT

Installing Your Scanner

1. Choose the scanner and model you wish to install, and then click **Install**.



FIGURE 14 - SELECTING A DEVICE AND MODEL

2. The *Add/Remove Devices* window appears. Choose the scanner you wish to add, and then click **Install**.



FIGURE 15 - ADD/REMOVE DEVICES

3. The *Install Wizard* appears. Disconnect the scanner's USB or power cable from your computer, and exit all other applications. Click **Next** in the *Install Wizard* to continue (shown below).

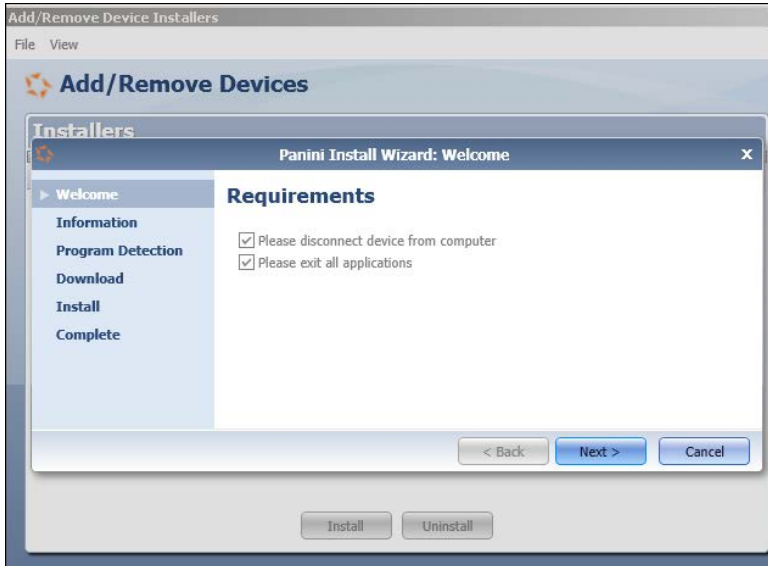


FIGURE 16 - INSTALL WIZARD

4. The *Install Wizard* displays the *Installer Information* prompt. Choose **Next** to continue.

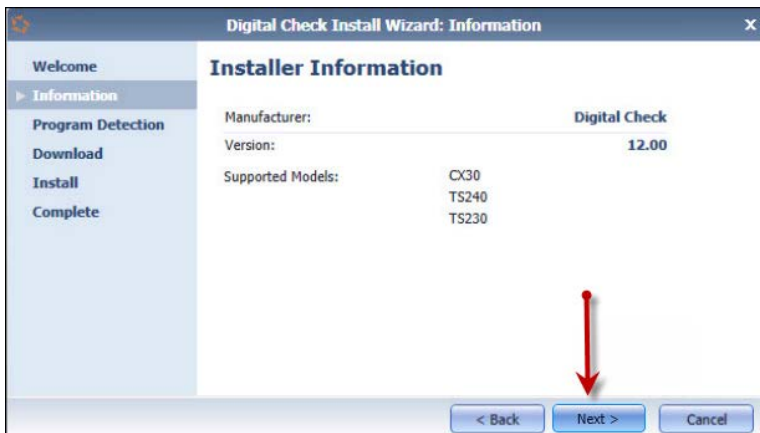


FIGURE 17 - INSTALLER INFORMATION

5. The *Install Wizard* displays the *Install Ready* prompt. Click **Next** to continue.

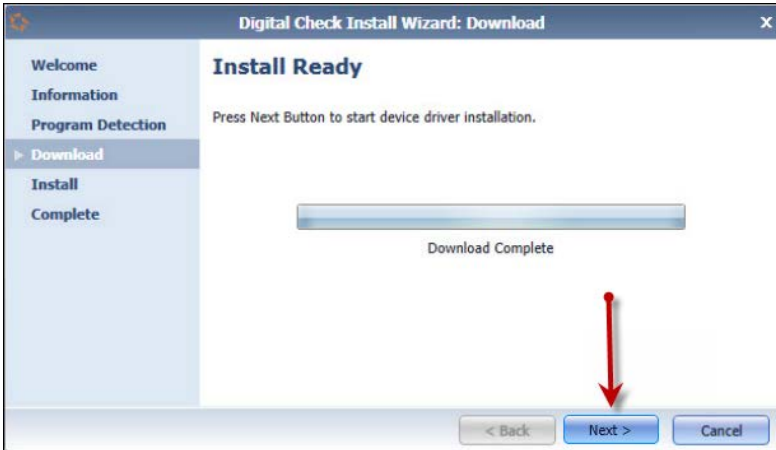


FIGURE 18 - INSTALL READY PROMPT

6. The *Install Wizard* displays the *Install Done* prompt. Select **Next** to continue.

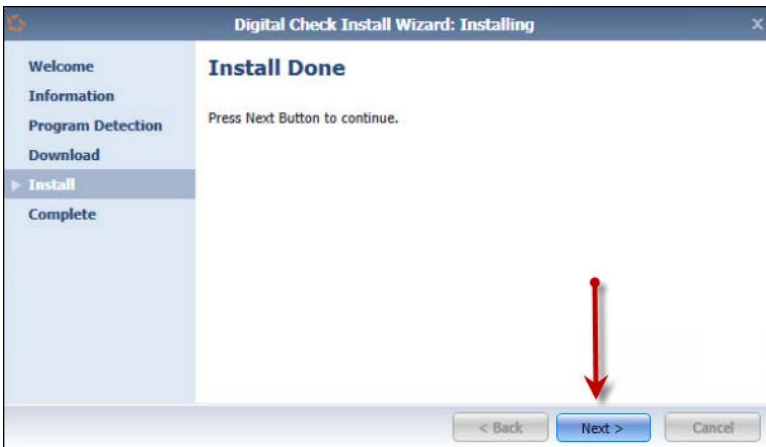


FIGURE 19 - INSTALL DONE

7. After the *Install Wizard* has completed, connect the scanner to your computer, and select **Finish**. The scanner is now installed.

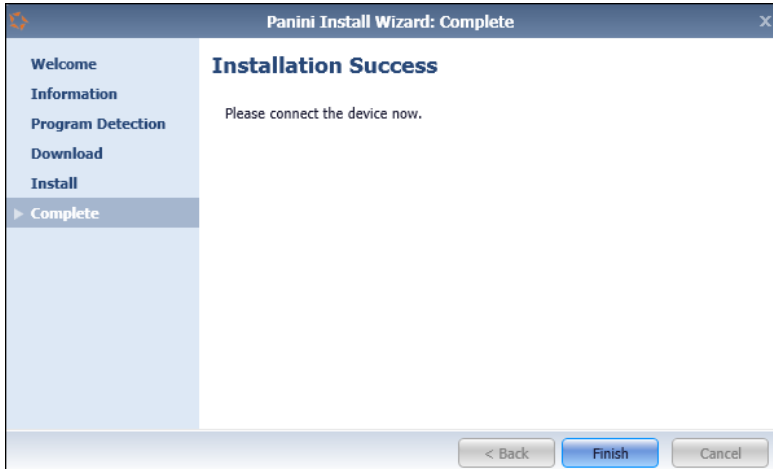


FIGURE 20 - INSTALLATION COMPLETE

NOTE: When you begin making deposits, you will need to choose a **Location** for the deposit. Once a location has been selected, ensure the **Terminal #** field is populated before scanning checks.
